

**Barrier**  
 Temperature  
**Transducer**  
 Power Galvanic  
**Supply Isolator**  
 DC/DC Analog  
 Converter Converter  
**Battery** Duplicator  
 Charger Redundant Module  
**Switching Power Supply**  
 Analog Input Digital Meter  
**Signal** Frequency  
 Conditioner Converter

**Industrial Process Recorder Controller**  
**Relay Industry Board Power Module**  
 Super Compact Relay  
**Slim Relay Solid State Module Safety Relay**  
 Electro Relay  
 Mechanical Relay Automation  
 Power Controller Industry  
**Terminal Block SSR**

**Surge Protection Device SPD** Diode Module  
 EMI Filter Passive  
 Fuse Module Interfaces  
 Controller Varistor  
**Dsub Connection Module**  
 Power Network Meter & Analyzer  
**Synchronizing Unit**  
 Measuring Digital Meter  
 Transducer I/O Module  
**Analog Meter** Interface  
 Data Logger Protocol  
 Converter  
 HMI Panel



## Industrial Automation Products

### Overview

2016.03



# Signal Conditioners, and Relay Modules



## Ultra Compact Signal Conditioners



**Universal Analog Converter**

<b>Input Signal</b>	0 (4)...20 mA / 0...10 V
<b>Output Signal</b>	0 (4)...20 mA / 0...10 V
<b>Notes</b>	Configurable, for In/Out signals

**Dual-Output Analog Converter**

<b>Input Signal</b>	0 (4)...20 mA / 0...10 V
<b>Output Signal</b>	2 * 0 (4)...20 mA / 2 * 0...10 V
<b>Notes</b>	Configurable, with 2 output signals

**Isolator & Analog Converter**

<b>Input Signal</b>	0...20 mA or 4...20 mA or 0...10 V
<b>Output Signal</b>	0...20 mA or 4...20 mA or 0...10 V
<b>Notes</b>	Single In/Out signal

**Temperature Transducer for RTD**

<b>Input Signal</b>	Pt100 / PT1000
<b>Output Signal</b>	0 (4)...20 mA / 0...10 V
<b>Notes</b>	Configurable, for temperature ranges from -200 C...+850 C



**NEW PRODUCT**



**Programmable Analog Converter**

<b>Input Signal</b>	12 Programmable Ranges
<b>Output Signal</b>	7 Programmable Ranges
<b>Notes</b>	Refer to Catalogue

**Variable Current Transducer**

<b>Input Signal</b>	0...10 AC/DC Variable
<b>Output Signal</b>	0 (4)...20 mA / 0...10 V
<b>Notes</b>	With Output Relay

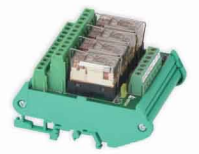
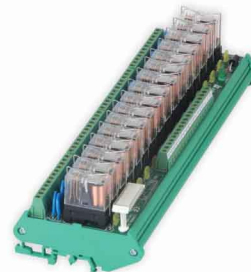
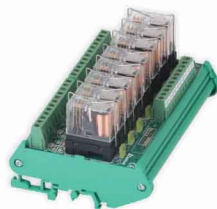
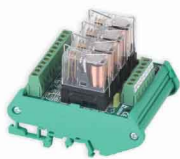
**Current Transducer**

<b>Input Signal</b>	0...1 A AC/DC
<b>Output Signal</b>	0 (4)...20 mA / 0...10 V
<b>Notes</b>	Configurable, for output signals

**Current Transducer**

<b>Input Signal</b>	0...5 A AC/DC
<b>Output Signal</b>	0 (4)...20 mA / 0...10 V
<b>Notes</b>	Configurable, for output signals

## Multiple Electro Mechanical Relay Modules



**4-Channel, 1CO Contact**

<b>Input Voltage</b>	12/24 DC or 110/220 AC or 12/24 AC/DC
<b>Output</b>	250 VAC 10 A, 30 VDC 16 A
<b>Notes</b>	with protection circuit

**8-Channel, 1CO Contact**

<b>Input Voltage</b>	12/24 DC or 110/220 AC or 12/24 AC/DC
<b>Output</b>	250 VAC 10 A, 30 VDC 16 A
<b>Notes</b>	with protection circuit

**16-Channel, 1CO Contact**

<b>Input Voltage</b>	12/24 DC or 110/220 AC or 12/24 AC/DC
<b>Output</b>	250 VAC 10 A, 30 VDC 16 A
<b>Notes</b>	with protection circuit

**4-Channel, 2CO Contact**

<b>Input Voltage</b>	12/24 DC or 110/220 AC or 12/24 AC/DC
<b>Output</b>	250 VAC 5 A, 30 VDC 8 A
<b>Notes</b>	with protection circuit

## Slim Relay Modules



**8-Channel, 1CO Contact**

<b>Input Voltage</b>	12 or 24 or 220 AC/DC
<b>Output</b>	250 VAC 6 A, 30 VDC 6 A
<b>Notes</b>	with protection circuit

**Single, 1CO Contact**

<b>Input Voltage</b>	24 DC
<b>Output</b>	250 VAC 6 A, 30 VDC 6 A
<b>Notes</b>	with protection circuit

**Single, 1CO Contact**

<b>Input Voltage</b>	220 AC
<b>Output</b>	250 VAC 6 A, 30 VDC 6 A
<b>Notes</b>	Protected with bridge rectifier

**Single, 1CO Contact**

<b>Input Voltage</b>	24 AC/DC
<b>Output</b>	250 VAC 6 A, 30 VDC 6 A
<b>Notes</b>	Protected with bridge rectifier



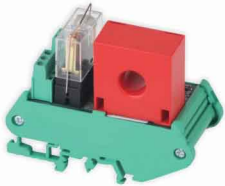
**Temperature Transducer for Type J & K**  
 Thermocouples type J & K  
**0 (4)...20 mA / 0...10 V**  
 Configurable, for temperature ranges  
 from -200°C...+1200°C

**Potentiometer Transducer**  
 Potentiometer 0...1(10) kOhm  
**0 (4)...20 mA / 0...10 V**

**Universal Measuring Transducer**  
 TC<sup>(1)</sup> / Pt100 / Pt1000 / Ni100 / PTC / KTY  
**0 (4)...20 mA / 0...10 V**  
<sup>(1)</sup> Thermocouples B, C, D, E, J, K, L, N, R, S, T, U  
 Programmable, for In/Out signals

**Frequency Transducer**  
 0...28.8 kHz  
**0 (4)...20 mA / 0...10 V**  
 Input signal type AC/DC 0.6...30 Vpp  
 Configurable via DIP switch

## Digital Meters, and Threshold Converter



NEW  
PRODUCT



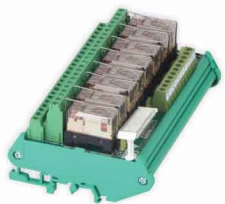
NEW  
PRODUCT

**Current to Threshold Converter**  
 MAX 50 A (AC)  
**Closed I < threshold, Open I > threshold**  
 Converting AC current into threshold,  
 with *threshold* regulation 2...40 A

**Digital Meter**  
 Pt100 / J / K / 0 (4)...20 mA / 0...10 V  
**2\*OC** (output supply 24V 30 mA)  
 Display 3-color programmable  
 LED 5 digits

**Power Network Parameters Meter**  
 Voltage, Current, Power  
 Relay  
 LED 3\*3 Digits

## Multiple Super Compact Relay Modules



NEW  
PRODUCT



NEW  
PRODUCT

**8-Channel, 2CO Contact**  
 12/24 DC, 110/220 AC, 12/24 AC/DC  
**250 VAC 5 A, 30 VDC 8 A**  
 with protection circuit

**16-Channel, 2CO Contact**  
 12/24 DC, 110/220 AC, 12/24 AC/DC  
**250 VAC 5 A, 30 VDC 8 A**  
 with protection circuit

**4-Channel, 1CO Contact**  
 24 AC/DC  
**250 VAC 8 A**  
 Protected with bridge rectifier

**8-Channel, NO Contact**  
 24 AC/DC  
**250 VAC 8 A**  
 Protected with bridge rectifier

## Solid State Relay Modules

## Safety Relay Modules



SSR

**Single, NO Contact**  
 5 or 24 or 60 AC/DC  
**24 VDC 3 A**  
 with polarity and surge protection



SSR

**Single, NO Contact**  
 5 or 24 or 60 AC/DC  
**24...253 VAC/DC 2 A**  
 with RCV circuit protection



SSR

**Single, NO Contact**  
 5 or 24 or 60 AC/DC  
**3...48 DC 100 mA**  
 with polarity and surge protection



**8-Channel**  
 24 VAC/DC  
**15...250 VAC/DC 6 A**  
 Compact versions are available

# Switching Power Supplies



## Classic Power - Single Phase



	APC82015-C	APC82030-C	APC82050-C	APC82070-C
<b>Input(AC)</b>	90...264 VAC / 100...315 VDC	90...264 VAC / 100...315 VDC	90...264 VAC / 100...345 VDC	90...264 VAC / 100...370 VDC
<b>Output(DC)</b>	24VDC, 0.6 A	24VDC, 1.2 A	24VDC, 2.2 A	24VDC, 3 A
<b>Notes</b>				

## Soft Power - Single Phase



	APS82085-C	APS82120-C	APS82240-C	APS82500-C
<b>Input(AC)</b>	90...264 VAC / 100...345 VDC	90...264 VAC / 100...345 VDC	90...132 VAC / 185...264 VAC / 300...345 VDC	90...132 VAC / 185...264 VDC
<b>Output(DC)</b>	24VDC, 3.5 A	24VDC, 5 A	24VDC, 10 A	24VDC, 20 A
<b>Notes</b>				



	APU82120-CP	APU82240-CP	APU82120-DP	APU82240-DP
<b>Input(AC)</b>	90...264 VAC / 100...345 VDC	90...132 VAC / 185...264 VAC / 300...345 VDC	90...264 VAC / 100...345 VDC	90...132 VAC / 185...264 VAC / 300...345 VDC
<b>Output(DC)</b>	24VDC, 5 A	24VDC, 10 A	48VDC, 2.5 A	48VDC, 5 A
<b>Notes</b>	Factory provided with ORing diode	Factory provided with ORing diode	Factory provided with ORing diode	Factory provided with ORing diode

## Tri Power-3 Phase



	APT82960-C	APT82500-D	APT82720-D	APT82960-D
<b>Input(AC)</b>	340...550 VAC	340...550 VAC	340...550 VAC	340...550 VAC
<b>Output(DC)</b>	24VDC, 40 A	48VDC, 10 A	48VDC, 15 A	48VDC, 20 A
<b>Notes</b>				



**APC82015-B**

90...264 VAC / 100...315 VDC  
12VDC, 1.2 A



**APC82050-B**

90...264 VAC / 100...345 VDC  
12...15 VDC, 3.5...3 A



**APC82030-E**

90...264 VAC / 100...345 VDC  
5...15 VDC, 3.3...1.5 A



**APC82030-F**

90...264 VAC / 100...345 VDC  
±12 ...±15 VDC, 2\* 0.6 A

## Ultra Power



**APS82085-B**

90...264 VAC / 100...345 VDC  
12...15 VDC, 6 A



**APS82120-B**

90...264 VAC / 100...345 VDC  
12...15 VDC, 7 A



**APS82240-B**

90...132 VAC / 185...264 VAC / 300...345 VDC  
12...15 VDC, 16 A



**APU82085-CP**

90...264 VAC / 100...345 VDC  
24VDC, 3.5 A

Factory provided with ORing diode

## Tri Power -3Phase



**APU82500-DP**

90...132 VAC / 185...264 VAC  
48VDC, 10 A

Factory provided with ORing diode



**APU82240-GP**

90...132 VAC / 185...264 VAC / 300...345 VDC  
72 VDC, 3.5 A

Factory provided with ORing diode



**APT82500-C**

340...550 VAC  
24VDC, 20 A



**APT82720-C**

340...550 VAC  
24VDC, 30 A

## General Power -1 or 2 Phase



**APT82500-G**

340...550 VAC  
72VDC, 6.7 A



**APG82120-C**

185...550 VAC / 270...725 VDC  
24VDC, 5 A



**APG82240-C**

185...480 VAC / 270...650 VDC  
24VDC, 10 A



**APD82240-C**

90...130 VDC  
24VDC, 10 A

## DC/DC Converter

## I/O Modules

- ▶ Input/Output Module
- ▶ Data Logger
- ▶ Interface Protocol Converter
- ▶ Radio Transmission Module
- ▶ Recorder

## Passive Interface Modules

- ▶ Opto-Isolator Module
- ▶ Connection Board Module (D-Sub, IDC)
- ▶ Diode Module
- ▶ Fuse, and Varistor Modules
- ▶ Surge Protection Device (SPD)
- ▶ EMI Filter

For more information

in our literature

1 800 451 7237  
www.mouser.com  
Mouser Electronics, Inc.  
3090 Central Expressway, Santa Clara, CA 95051  
Tel: 408 744 6800 Fax: 408 744 6801  
www.mouser.com