

GENERAL CATALOGUE



ENGLISH / ITALIAN EDITION

SERIES 90
SOLENOID VALVE PILOT OPERATED 2/2 WAY N.C.
Elettrovalvola servocomandata 2/2 vie N.C.
PRODUCT
HIGHLIGHTS

- 2/2 way pilot operated N.C
- 1 – 10 bar
- Connection 3/8" – 2"
- Seals/Tenuta: PTFE • Steam
- Nickel-plated Brass
- Sealing seat in stainless steel
- 3 pole connector IP65 included - UNI ISO 4400 (DIN 43650A)

DESCRIPTION

Solenoid valve pilot operated 2/2 way N.C. These series of valves are especially indicated for steam applications. The principal closing is by a PTFE piston, with PTFE radial seal bands, graphite loaded and self-lubricating. The wide range of valves, with connection from 3/8" to 2" are able to meet any types of needs.

The valves with G3/8" and G1/2" connections are available in 2 different sizes. Valve supplied with three pole connector IP65 - UNI ISO 4400 (DIN 43650A).

DESCRIZIONE PRODOTTO

Elettrovalvola servocomandata 2/2 vie N.C. Questa serie di valvole è particolarmente indicata per applicazioni con vapore. L'otturatore principale è un pistone in PTFE con fasce di tenuta radiale in PTFE caricato a grafite e autolubrificante. L'ampia gamma, con connessioni da 3/8" a 2" è in grado di soddisfare ogni tipo di necessità. Le valvole con attacchi da G3/8" e 1/2" sono disponibili in 2 diverse taglie. Elettrovalvola fornita con connettore tripolare IP65 - UNI ISO 4400 (DIN 43650A).



Steam

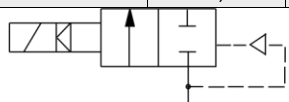
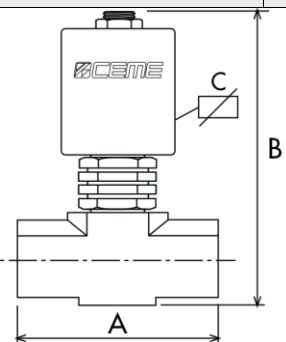
GENERAL FEATURES / CARATTERISTICHE GENERALI

Body material / Materiale corpo	Brass		
Seal material / Materiale guarnizioni	PTFE		
Fluid Temp. °C / Temp. fluido °C	180°C		
Tube material / Materiale canotto	Stainless Steel		
Ambient temp. / Temp. ambiente	80°C		
Working fluids / Fluidi di lavoro	Steam		
Electrical connect. / Connes. elettrica	6,3 x 0,8 fast-on terminal - UNI ISO 44 00		
Insulation class / Classe di isolamento	H according to EN 60730		
Min. Differential working pressure / Pressione minima di esercizio	1 bar		
Coil voltage / Voltaggio	220-230VAC 50-60Hz	100-120VAC 60Hz	12-24 VDC
Coil Power / Potenza solenoide	18 VA	32 VA	13 W
Ambient temp. / Temp. ambiente	120 °C	80 °C	80 °C
Approvals / Certificazioni	VDE; CE	UL	CE

SPECIFICATIONS / CARATTERISTICHE

CONNECTION	ORIFICE Ø (mm)	KV m³/h	M.O.P.D. (bar)		DIMENSIONS (mm)			CODE
			AC	DC	A	B	C	
G 3/8	12	2,4	10	5	73	118	48	9003
G 1/2	12	2,4	10	5	73	118	48	9004
G 3/8	8	1,08	10	5	56	99	60	9013
G 1/2	8	1,08	10	5	56	99	60	9014
G 3/4	21	6,3	10	5	100	134	80	9015
G 1	21	6,3	10	5	100	139	80	9016

G 1,1/4	38	20,4	10	5	146	184	128	9017
G 1,1/2	38	20,4	10	5	146	184	128	9018
G 2	50	34,8	10	5	174	219	146	9019



HYDRAULIC CONNECTION		
2/2 WAY N.C.		2/2 WAY N.O.
IN/OUT G3/8	IN/OUT G1/2	IN/OUT G2
9003-9004	9013-9014	9015-9016-9018-9019
	<p>Technical drawing of the valve body showing dimensions 11, 18, and M4. Dimension 11 is the height of the valve body, 18 is the width, and M4 is the thread size of the bottom connection.</p>	