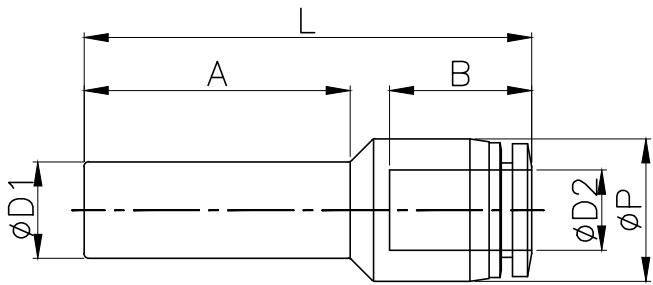


PGJ



MODEL	$\phi D1$	$\phi D2$	ϕP	L	A	B	ORIFICE	WEIGHT (g)	BOX(EA)
PGJ 0406	4	6	12.5	40.0	21.0	16.4	2.5	2.9	100
PGJ 0604	6	4	10.5	37.7	21.8	14.8	3.0	3.0	100
PGJ 0608	6	8	14.8	43.5	22.5	18.4	4.0	4.2	100
PGJ 0804	8	4	10.5	39.7	24.8	14.8	3.0	4.0	100
PGJ 0806	8	6	12.5	40.0	23.8	16.4	4.8	5.0	100
PGJ 1006	10	6	12.5	44.0	28.8	16.4	4.0	6.0	50
PGJ 1008	10	8	14.8	46.4	27.6	18.3	6.8	7.0	50
PGJ 1206	12	6	12.5	50.0	30.5	16.4	5.0	6.0	50
PGJ 1208	12	8	14.8	50.4	32.6	18.3	6.0	7.0	50
PGJ 1210	12	10	17.5	52.9	31.2	20.2	8.0	8.0	50
PGJ 1216	12	16	25.5	58.5	33.25	24.1	8.0	—	—
PGJ 1612	16	12	20.5	63.3	37.7	23.1	10.0	16.0	25