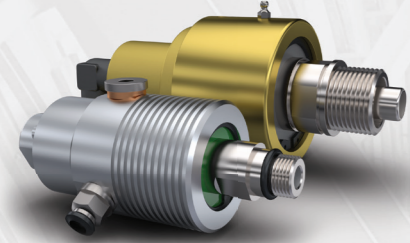


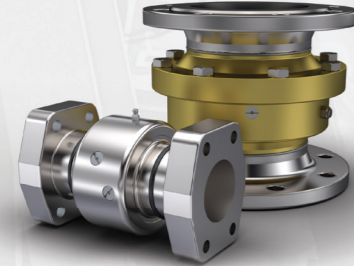


Fluid Transfer Mechanisms

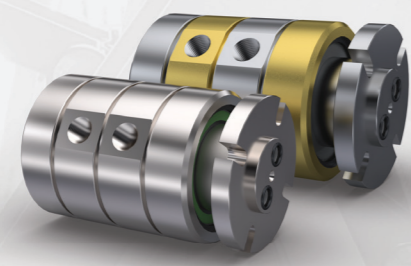
We are manufacturing Rotary, Swivel and Multiport joints for water, steam, hot oil, coolant, hydraulic oil and chemical fluid transfer mechanisms.



Rotary Joints



Swivel Joints

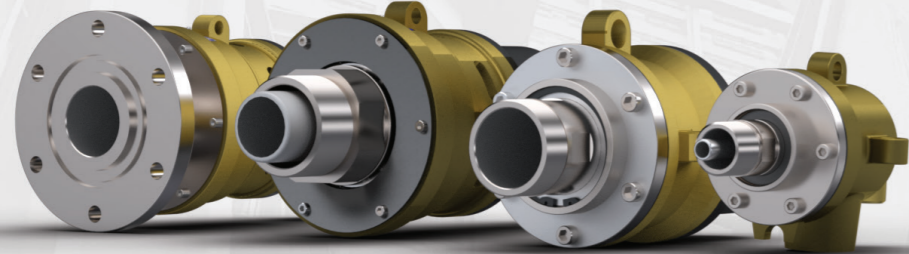


Multiport Joints

PRODUCTION TECHNOLOGY

Our understanding of production based on current scientific knowledge and data causes us to provide development on sealing technologies. According to this, our production process goes through three main stages related to standard or special orders;

- Design
- Choice correct sealing parts and manufacturing
- Quality control



CAD systems used during manufacturing, various axis CNC machines, special mounting and test equipment ensure precise dimensioning and tolerances; swivel couplings are manufactured in a short time for special applications.

Quality control processes start at the raw material input, continue throughout the whole production and end with individual control before the finished product is shipped. After-sales quality services continue, close contact with users and products are developed in line with the information received.



Phone
+90 212 320 02 33

Fax
+90 212 320 06 73

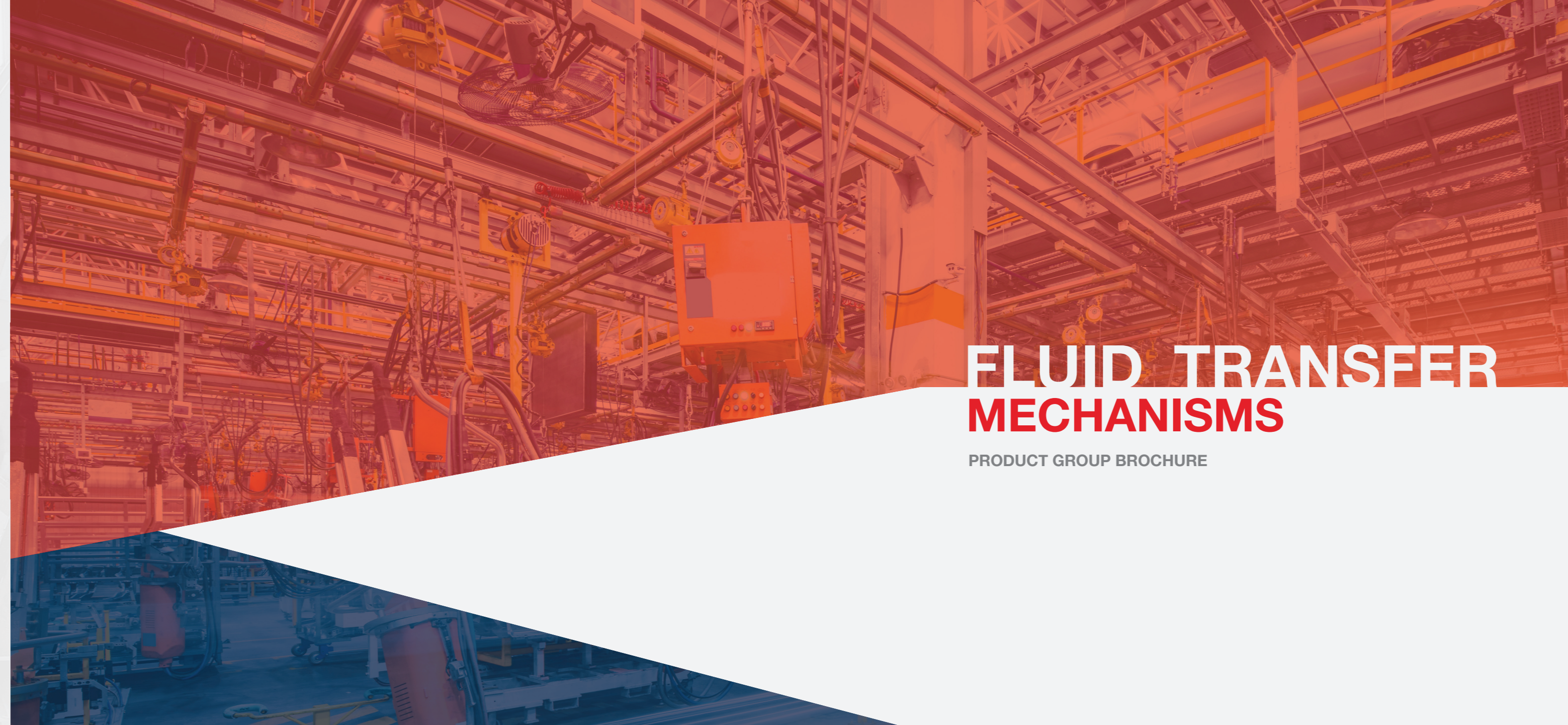
WhatsApp
+90 554 509 56 79

Info E-Mail
info@rototech.com.tr

Sales E-Mail
sales@rototech.com.tr

Web
www.rototech.com.tr

Address
Halil Rifat Paşa Mahallesi Yüzer Havuz Sokak Perpa Ticaret Merkezi
B Blok Kat:2 No:26 34384 Sisli, İstanbul / TURKEY



FLUID TRANSFER MECHANISMS

PRODUCT GROUP BROCHURE



ROTOTECH MAKİNA SAN.VE DIŞ.TİC.LTD.ŞTİ. which was founded in 2001, became a company renowned worldwide in the field of design and manufacturing of rotary joints, swivel joints, syphon systems and loading arms within a short span of time.



Products are used in various different industries including steel, textile, paper, food, chemistry, petrochemistry, aluminium, automotive, pharmaceuticals, construction materials, canned foods, cement, construction equipment, beverages and food, floor and wall coverings, leather sector, wood, machine tools, mining, petroleum, plastic, printing, etc.

Our company has developed a manner of work focused on customers' demands by giving particular importance to customer satisfaction. We offer quick and economical solutions for standard and custom manufacturing practices.

Up-to-date software and state of the art technologies such as CNC machinery are used to ensure measurement accuracy. Rotary unions are also manufactured upon demand for customary applications. Furthermore, we give special importance to research & development activities.

ROTOTECH gives special importance to quality control. From start to completion, every project undertaken are closely monitored to ensure its smooth progress.

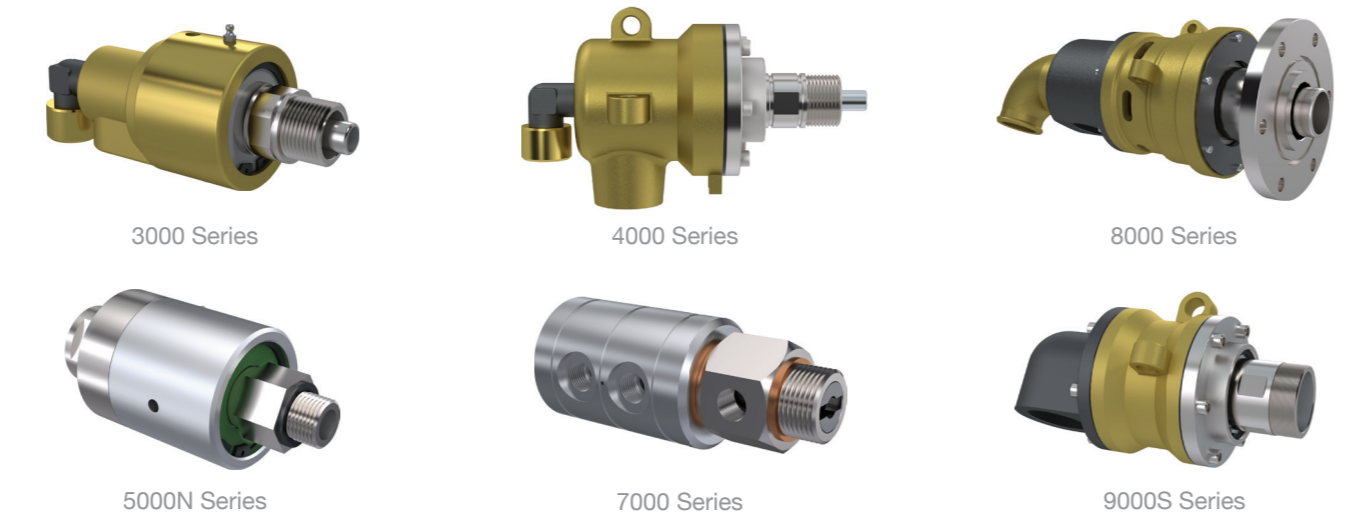
ROTARY JOINTS

Coolant



ROTARY JOINTS

Water + General Purpose Steam Hydraulic Oil



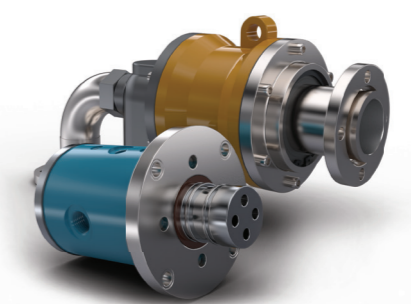
SWIVEL JOINTS

Water + General Purpose Hydraulic Oil



CUSTOM PRODUCTS

We are manufacture products for special working conditions and dimensions.

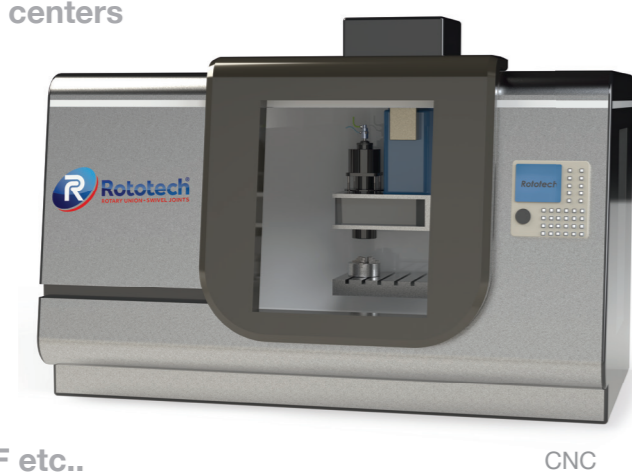


Iron Steel, Plastic, Packaging, Paper, Textile, Machining Centers, Vehicle Mounted Equipment, Chemistry, Energy, Rubber/Tire etc. . We offer solutions to many sectors.

Here are some special application rotary joints ;

Where to use?
For CNC machines and vertical machining centers, rotating joints for boron oily water passage.

- ✓ For CNC machines and vertical machining centers
- ✓ Easy assembling, high rpm
- ✓ Silicon Carbide sealing parts
- ✓ Full capacity fluid transfer
- ✓ Aluminum, anti - corrosion body
- ✓ Dry and wet using
- ✓ Drainage holes
- ✓ Many thread options Metric,BSP,NPT, UNF etc..

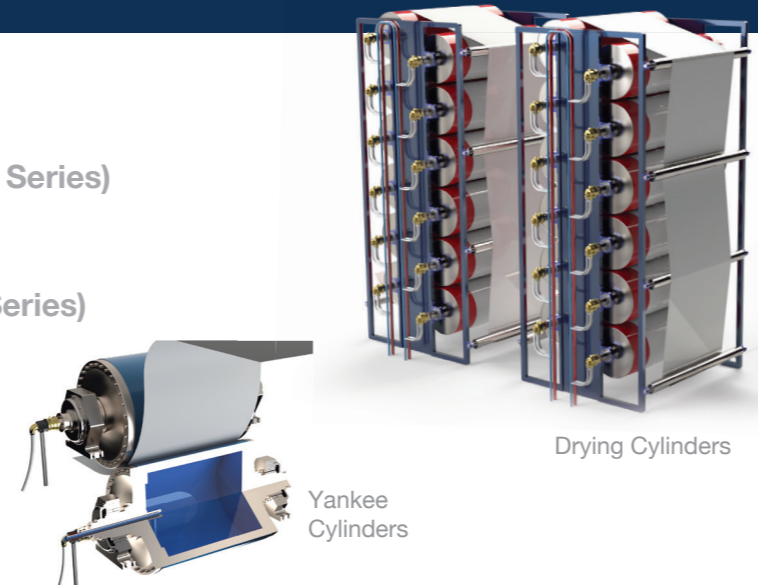


Working Conditions	100	105	110	115	120	125
Media Type						
Max. Speed	10.000 Rpm	10.000 Rpm	10.000 Rpm	10.000 Rpm	12.000 Rpm	12.000 Rpm
Max. Pressure	40 Bar	50 Bar	50 Bar	50 Bar	50 Bar	50 Bar
Max. Temperature	70 °C	70 °C	70 °C	70 °C	70 °C	70 °C
Rotor Size	M16x1,5 LH	M16x1,5 LH	M16x1,5 LH	M16x1,5 LH	M16x1,5 LH	M16x1,5 LH

<https://www.markazbargh.com/>

Where to use?
Rotary joints are mechanical sealing components used to transfer fluids from a stationary source into rotating cylinders of machinery. Rotary joints enable transfer of the fluids used to heat and cool.

- ✓ Single and duoflow design
- ✓ Forged brass housing (3000&3000PAS Series)
- ✓ Stainless steel shaft and inner parts
- ✓ Nodular casting housing (4000&9000 Series)
- ✓ Stationary or rotating siphon system
- ✓ Threaded, QR & flanged connection
- ✓ Easy changable repair parts

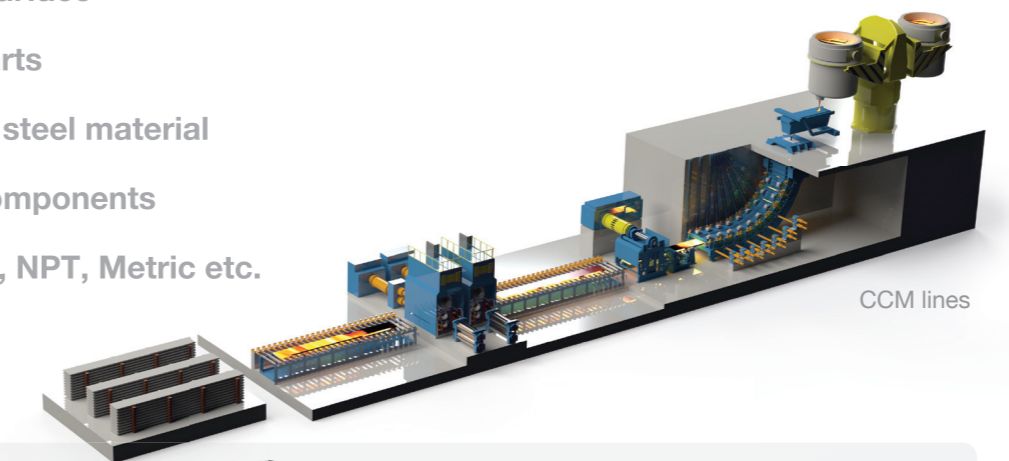


Working Conditions	3000	4000	5000N	7000	8000	9000S
Media Type						
Max. Speed	3.500 Rpm	400 Rpm	1500 Rpm	250 Rpm	750 Rpm	750 Rpm
Max. Pressure	50 Bar	17 Bar	300 Bar	200 Bar	17 Bar	17 Bar
Max. Temperature	120 °C	180 °C	90 °C	90 °C	100 °C	160 °C
Rotor Size	1/4" - 2"	1/2" - 2"	1/8" - 1"	3/4" - 1 1/4"	2 1/2" - 4"	2 1/2" - 4"

<https://www.markazbargh.com/product-category/rotary-joint/>

Where to use?
Swivel joints for water, hydraulic oil and various chemical fluids.

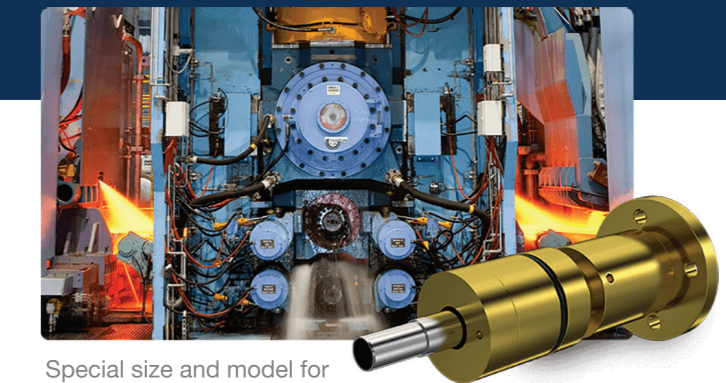
- ✓ Single flow design, slow rotation
- ✓ Hardened inner sealing surface
- ✓ Easy changable repair parts
- ✓ Stainless steel or carbon steel material
- ✓ Special design sealing components
- ✓ Flanged or threaded BSP, NPT, Metric etc.



Working Conditions	BF1	BF2	BF3	EPT3	EPT5	FR
Media Type						
Max. Speed	20 Rpm	20 Rpm	20 Rpm	20 Rpm	20 Rpm	20 Rpm
Max. Pressure	250 Bar	250 Bar	250 Bar	250 Bar	250 Bar	300 Bar
Max. Temperature	120 °C	120 °C	120 °C	120 °C	120 °C	120 °C
Rotor Size	1/2", 10"	1/2", 10"	1/2", 10"	1/2" - 3"	1/2" - 3"	1/4" - 1 1/2"

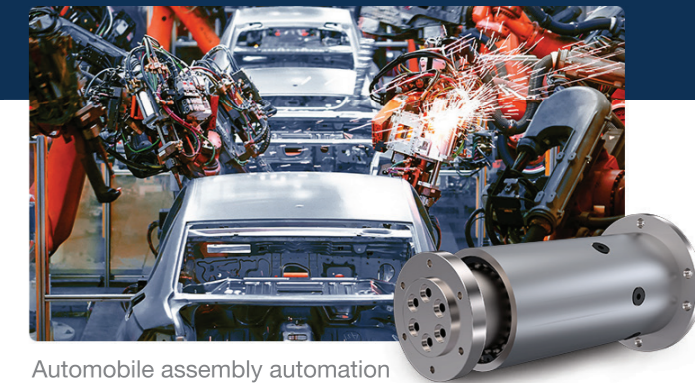
<https://www.markazbargh.com/brand/rototech/>

STEEL MAKING INDUSTRY
ROLLING MILL MACHINE ROTARY JOINT



Special size and model for Steel Making Industry / Rolling mill machine rotary joint. Complete with yellow body and stainless steel inner shaft model. Resistant to external temperatures. Long lasting sealing parts. It is just one of our special models in iron and steel production lines.

AUTOMOTIVE
AUTOMOTIVE ASSEMBLING LINE



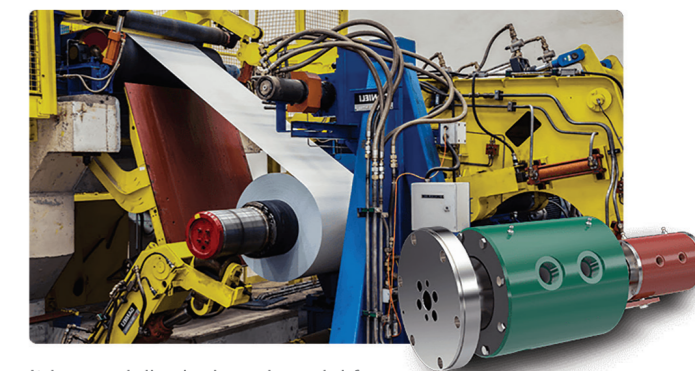
Automobile assembly automation line hydraulic distributor multi pass rotary joint. It is used for the transmission of fluids such as hydraulic oil, grease and air to the robot or moving rotary mechanisms in the assembly lines.

REFINRY
GRESS SEALING APPLICATION



Grease lubrication line, high pressure swivel joint. Intermediate sealing swivel fitting to prevent torsion between the installed location and hoses, which can be used wherever grease is pumped to refineries, power plants or machinery.

IRON&STEEL
MANDREL MACHINE MULTIPOINT



It is specially designed model for hydraulic and grease lubrication, shaft opening and closing of sheet metal and plate winding machines in iron and steel industry.

<https://www.markazbargh.com/brand/pneu-control/>