

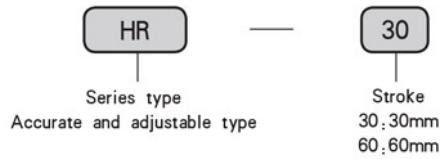
HR Series



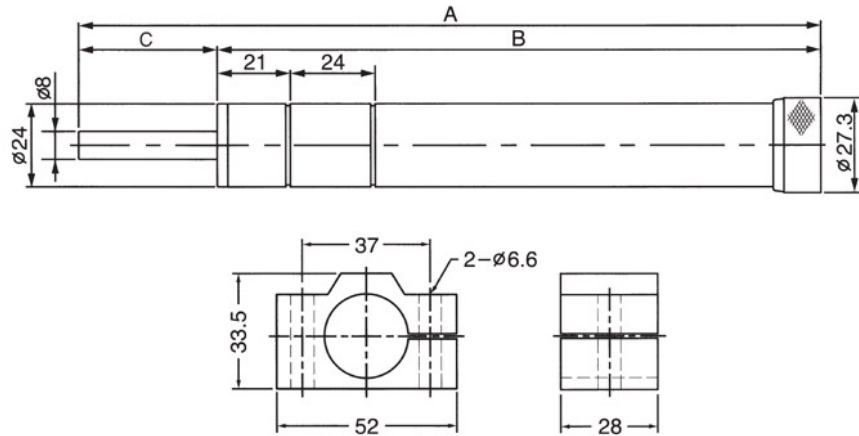
● **Product characteristic**

1. It can control steadily for a long time and return by spring.
2. It's dustproof and leak proof with complete hermetic structure. Can be used in different special conditions.
3. Under the change of temperature, oil viscosity is still very steady.
4. For small volume and easy installation, it's comprehensive used in manipulator, grind machine and cutting machine etc.

● **Ordering Code**



■ **Figure Dimension**



| Type | A | B | Max. Stroke | Applicable temperature | Max. Weight | Adjustable speed range |
|-------|-----|-----|-------------|------------------------|-------------|---------------------------|
| HR15 | 151 | 136 | 15mm | 0-60°C | 15-350 kgf | 0.5~30mm/s(load : 100kg) |
| HR30 | 202 | 172 | 30mm | 0-60°C | 15-350 kgf | 0.5~30mm/s(load : 100kg) |
| HR60 | 254 | 194 | 60mm | 0-60°C | 15-350 kgf | 0.5~30mm/s(load : 100kg) |
| HR80 | 336 | 256 | 80mm | 0-60°C | 15-350 kgf | 0.5~30mm/s(load : 100kg) |
| HR100 | 390 | 290 | 100mm | 0-60°C | 15-350 kgf | 0.5~30mm/s(load : 100kg) |