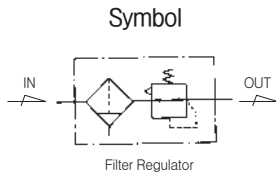


# Series PP2

## Piggyback 1/8" and 1/4"



PAT

### Standard Specifications

Fluid	Air	
Max. Operating Pressure (MPa)	1.0(140psi)	
Proof Pressure (MPa)	1.5(200psi)	
Set Pressure (MPa)	Standard	0.05~1.0(7~140psi)
	Made to Order Specifications	0.05~0.2(7~30psi), 0.05~0.4(7~60psi)
Ambient and Fluid Temperature (°C)	-5~60(23~140°F) (NON-freezing)	
Flow Capacity * (N ℓ /min)	1/8"	1,200(42scfm)
	1/4"	1,300(46scfm)
Filtration (μm)	Standard : 5	
Construction	Relieving Style	
Bowl Material	Polycarbonate	
Bowl Guard Material	Nylon	
Drain Capacity (cm <sup>3</sup> )	Manual Drain : 15, Auto Drain : 20	
Weight (kg)	0.23(0.5lb)	

\* Test conditions : Supply pressure 0.7MPa(100psi), pre-set 0.6MPa(90psi)

### How to Order

**PP 2 — \* 02 B D G — \***

Series (Piggyback Unit) — PP 2

Thread — \*

Blank	Rc(PT)
N	NPT
G	G(PF)

Port Size — 02

01	1/8
02	1/4

Bracket Option — B D G

Blank	None
B	Bracket + Panel Nut
B1	Panel Nut

Note2) Separately packed, Not assembled.

#### Other Option

Blank	Set at 0 to 1.0 MPa, 5μm (Standard)		
2	Set at 0 to 0.2 MPa	K	Built-in Check Valve
4	Set at 0 to 0.4 MPa	R	Flow Direction : Right-Left
E	Non-Relieving Type	T	Tamper Resistant Kit
J2	Filter element - 20μm	XC16	Copper-free
J4	Filter element - 40μm	Q2	Metal Bowl NO Sight Glass

Note1) Refer to page 935 for Built-in Check Valve, Tamper Resistant Kit.  
 \* If ordering more than one option, indicate symbols umerically then alphabetically Ex) 2EK  
 \* Over Max. pressure value can be set.

#### Pressure Gauge

Symbol	Description	Pressure Range
Blank	NO-Gauge	
G	Integral Pressure Gauge (W/Limit Indicator)	1.0MPa(140psi)
P	Pressure Gauge	1.0MPa(140psi)
P2	Pressure Gauge	0.2MPa(30psi)
P4	Pressure Gauge	0.4MPa(60psi)

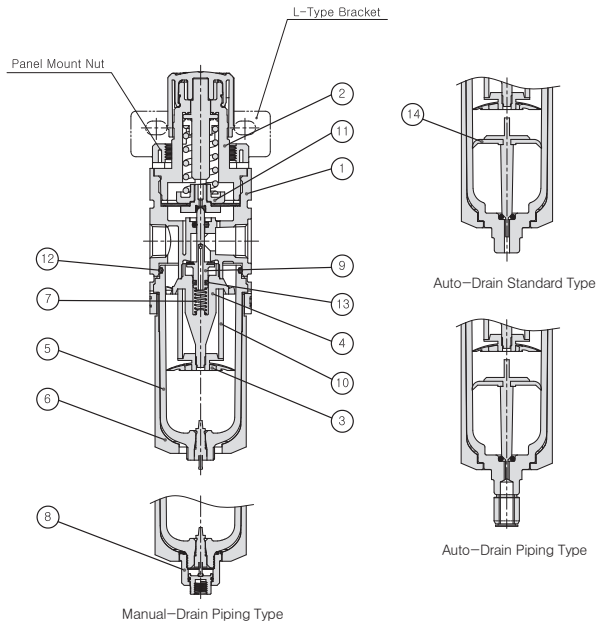
#### Drain Option

Blank	Manual Push Drain	
D	Auto Drain (N.O Type)	Note3)
D2	Auto Drain	
D5	Manual Drain	

Note3) Min. operating pressure is 0.15MPa(20psi) for Auto Drain(N.O Type)

# Series PP2

## Construction



### Main Parts/Parts List

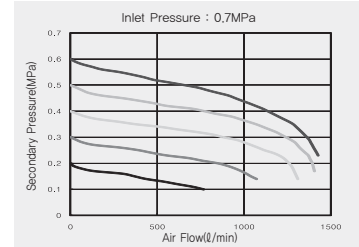
No.	Description	Material	Remark
①	Body	Aluminum	
②	Bonnet	Nylon	
③	Baffle	Acetal	
④	Deflector	Nylon	
⑤	Bowl	Polycarbonate	
⑥	Bowl Guard	Nylon	
⑦	Valve Spring	Stainless Steel	
⑧	Manual-Drain Pipe Ass'y	-	

### Replacement Parts/Parts List

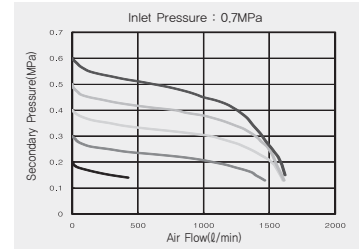
No.	Description	Material	Part No.
⑨	Valve Ass'y	Brass+NBR	PP2-08-001-01
⑩	Filter Element	Polyethylene	PF2-24-005-01
⑪	DiaphrAgm Ass'y	Nylon+NBR	PR2-11A001-01
⑫	Bowl O-ring	NBR	DX2R-53-3000
⑬	Valve O-ring	NBR	S4-01
⑭	Auto Bowl Ass'y (Auto-Drain Ass'y Included)	-	PF2-26A002-01

## Flow Characteristics

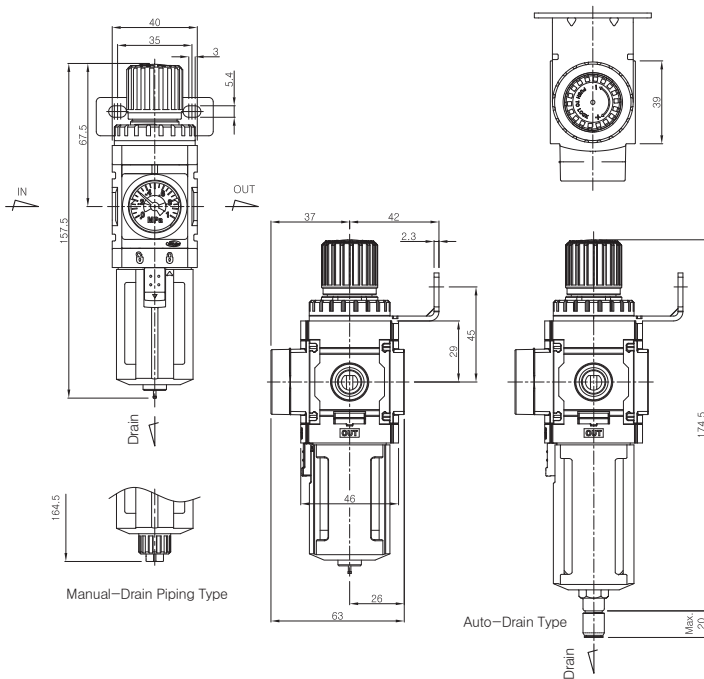
### ▶ 1/8" PP2



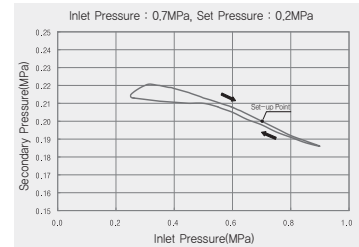
### ▶ 1/4" PP2



## Dimensions



## Pressure Characteristics



PC2

PF2

PR2

PL2

**PP2**

PC3

PF3

PR3

PL3

PP3

PC4

PF4

PR4

PL4

PP4

PC5

PF5

PR5

PL5

PP5

PFH(U)2~  
PFH(U)5

PPH(U)3~  
PPH(U)4

PLV

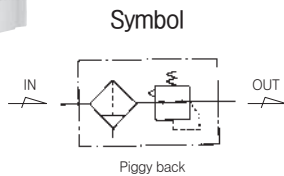
PSH

PCV

MB

# Series PP3

## Piggyback 1/4" and 3/8"



### Standard Specifications

Fluid		Air
Max. Operating Pressure (MPa)		1.0(140psi)
Proof Pressure (MPa)		1.5(200psi)
Set Pressure (MPa)	Standard	0.05~1.0(7~140psi)
	Made to Order Specifications	0.05~0.2(7~30psi), 0.05~0.4(7~60psi), 0.05~1.2(7~170psi)
Ambient and Fluid Temperature (°C)		-5~60(23~140°F) (Non-freezing)
Flow Capacity ※ (N l /min)	1/4"	2,100(74scfm)
	3/8"	2,600(92scfm)
Filtration (µm)		5
construction		Relieving Style
Bowl Material		Polycarbonate
Bowl Guard Material		Nylon
Drain Capacity (cm)		Manual Drain : 38(1.28oz), Auto Drain : 30(1.01oz)
Weight (kg)		0.49(1.08lb)

※ Test conditions : Supply pressure 0.7MPa(100psi), pre-set pressure 0.6MPa(90psi)

### How to Order

**PP 3 — \* 03 B D G — \***

Series (Piggyback Unit)

Thread

Blank	Rc(PT)
N	NPT
G	G(PF)

Port Size

02	1/4
03	3/8

Bracket Option

Blank	None
B	Bracket + Panel Nut
B1	Panel Nut

Note2) Separately packed, Not assembled.

#### Other Option

Blank	Set at 0 to 1.0 MPa, 5µm (Standard)		
2	Set at 0 to 0.2 MPa	J4	Filter element - 40µm
4	Set at 0 to 0.4 MPa	K	Built-in Check Valve
12	Set at 0 to 1.2 MPa	R	Flow Direction : Right - Left
E	Non-Relieving Type	T	Tamper Resistant Kit
J2	Filter element - 20µm	XC16	Copper-free
Q1	Metal Bowl With/Sight Glass	Q2	Metal Bowl NO Sight Glass

Note1) Refer to page 935 for Built-in Check Valve, Tamper Resistant Kit.

▪ If ordering more than one option, indicate symbols numerically then alphabetically Ex) 2EK

▪ Over Max. pressure value can be set.

#### Pressure Gauge

Symbol	Description	Pressure Range
Blank	None	
G	Integral Pressure Gauge (W/Limit Indicator)	1.0MPa
P	Pressure Gauge	1.0MPa
P2	Pressure Gauge	0.2MPa
P4	Pressure Gauge	0.4MPa

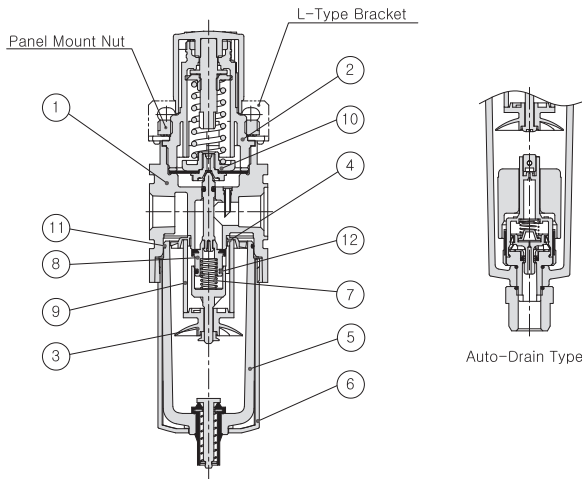
#### Drain Option

Blank	Manual Push Drain
D	Auto Drain (N.O Type)

Note3) Min. operating pressure is 0.15MPa (20psi) for Auto Drain (N.O Type)

# Series PP3

## Construction



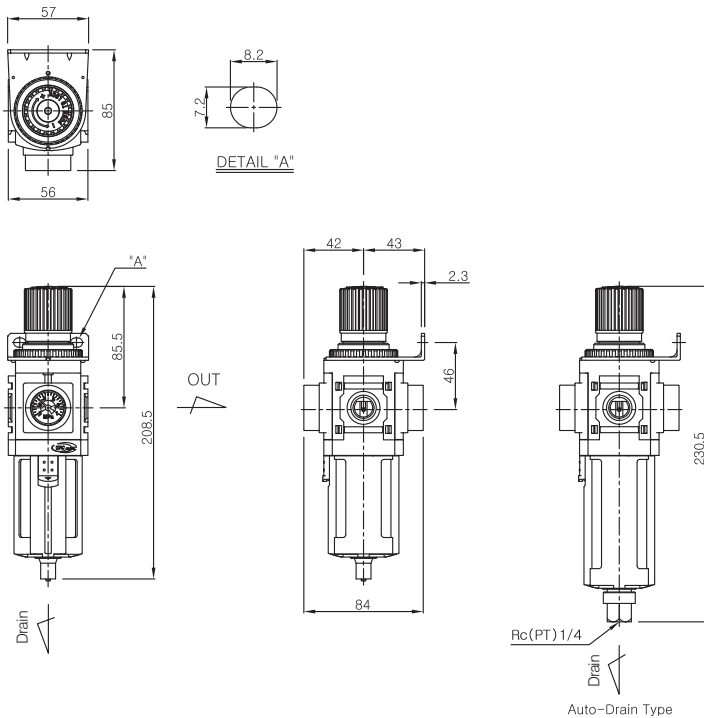
### Main Parts/Parts List

No.	Description	Material	Remark
①	Body	Aluminum	
②	Bonnet	Nylon	
③	Baffle	Acetal	
④	Deflector	Nylon	
⑤	Bowl	Polycarbonate	
⑥	Bowl Guard	Nylon	
⑦	Valve Spring	Stainless Steel	

### Replacement Parts/Parts List

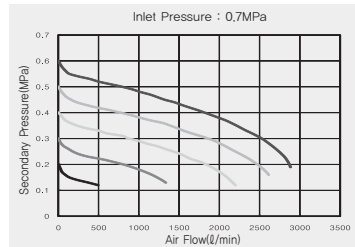
No.	Description	Material	Part No.
⑧	Valve Ass'y	Nylon+NBR	PP3-08A001-01
⑨	Filter Element	Polyethylene	PF3-24-005-01
⑩	Diaphragm Ass'y	Nylon+NBR	PR3-11A001-01
⑪	Bowl O-ring	NBR	PL3-04-001-01
⑫	Valve O-ring	NBR	P10-01

## Dimensions

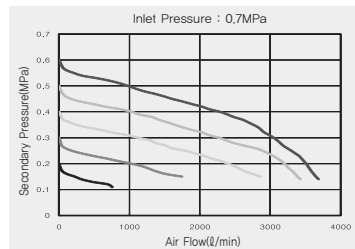


## Flow Characteristics

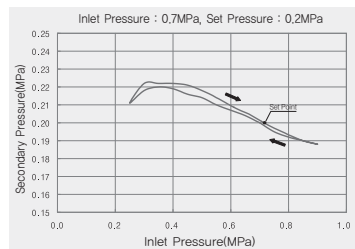
### ▶ 1/4" PP3



### ▶ 3/8" PP3



## Pressure Characteristics



PC2

PF2

PR2

PL2

PP2

PC3

PF3

PR3

PL3

**PP3**

PC4

PF4

PR4

PL4

PP4

PC5

PF5

PR5

PL5

PP5

PFH(U)2~  
PFH(U)5

PPH(U)3~  
PPH(U)4

PLV

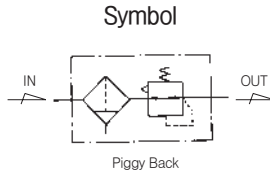
PSH

PCV

MB

# Series PP4

## Piggyback 3/8" and 1/2"



### Standard Specifications

Fluid	Air	
Max. Operating Pressure (MPa)	1.0(140psi)	
Proof Pressure (MPa)	1.5(200psi)	
Set Pressure (MPa)	Standard	0.05~1.0(7~140psi)
	Made to Order Specifications	0.05-0.2(7-30psi), 0.05-0.4(7-60psi), 0.05-1.5(7-200psi)
Ambient and Fluid Temperature (°C)	-5~60(23~140°F) (Non-freezing)	
Flow Capacity ※	3/8"	3,800(134scfm)
	1/2"	4,700(166scfm)
Filtration (μm)	5	
Construction	Relieving Style	
Bowl Material	Polycarbonate	
Bowl Guard Material	Nylon	
Drain Capacity (cm <sup>3</sup> )	Manual Drian : 56(1.89oz), Auto Drain : 68(2.3oz)	
Weight (kg)	0.74(1.63lb)	

※ Test conditions : Supply pressure 0.7MPa(100psi), pre-set pressure 0.6MPa(90psi)

### How to Order

**PP 4 — \* 04 B D G — \***

Series (Piggyback Unit)

Thread

Blank	Rc(PT)
N	NPT
G	G(PF)

Port Size

03	3/8
04	1/2

Bracket Option

Blank	None
B	Bracket + Panel Net
B1	Panel Net

Note1) Separately packed, Not assembled.  
Note2)

#### Other Option

Blank	Set at 0 to 1.0 MPa, 5μm (Standard)		
2	Set at 0 to 0.2 MPa	J4	Filter element - 40μm
4	Set at 0 to 0.4 MPa	K	Built-in Check Valve
15	Set at 0 to 1.5 MPa	R	Flow Direction : Right → Left
E	Non-Relieving Type	T	Tamper Resistant Kit
J2	Filter element - 20μm	XC16	Copper-free
Q1	Metal Bowl With/Sight Glass	Q2	Metal Bowl NO Sight Glass

Note1) Refer to page 935 for Built-in Check Valve, Tamper Resistant Kit.  
\* If ordering more than one option, indicate symbols numerically then alphabetically Ex) 2EK

\* Over Max. pressure value can be set.

#### Pressure Gauge

Symbol	Description	Pressure Range
Blank	None	
G	Integral Pressure Gauge (W/Limit Indicator)	1.0MPa
P	Pressure Gauge	1.0MPa
P2	Pressure Gauge	0.2MPa
P4	Pressure Gauge	0.4MPa

#### Drain Option

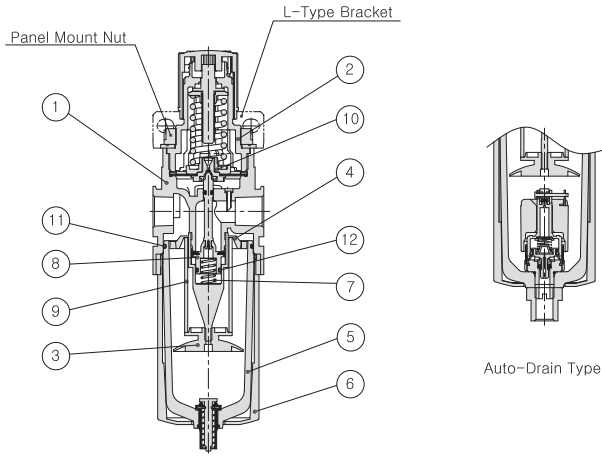
Blank	Manual Push Drain
D	Auto Drain (N.O Type)

Note3)

Note3) Min. operating pressure is 0.15MPa (20psi) for Auto Drain (N.O Type)

# Series PP4

## Construction



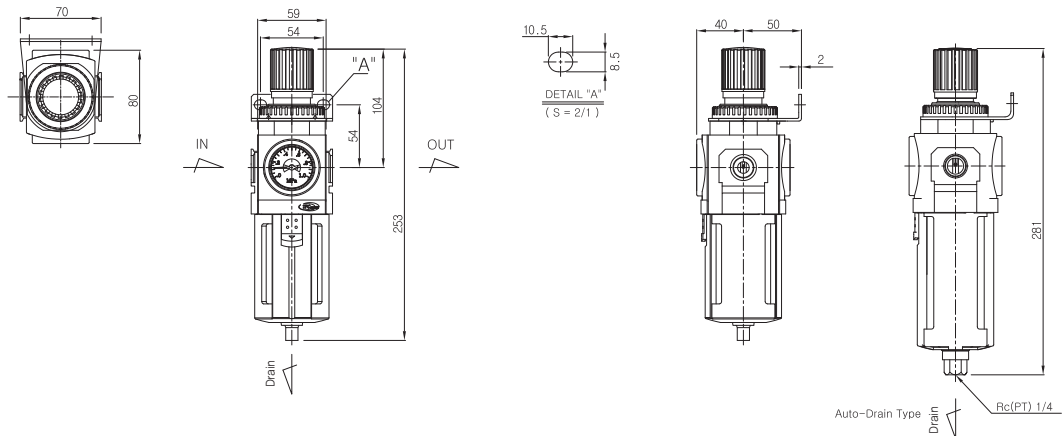
### Main Parts/Parts List

No.	Description	Material	Remark
①	Body	Aluminum	
②	Bonnet	Nylon	
③	Baffle	Acetal	
④	Deflector	Acetal	
⑤	Bowl	Polycarbonate	
⑥	Bowl Guard	Nylon	
⑦	Valve Spring	Stainless Steel	

### Replacement Parts/Parts List

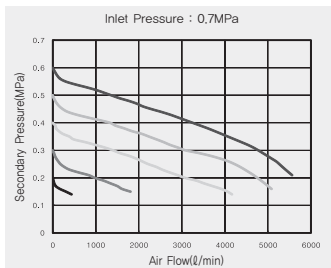
No.	Description	Material	Part No.
⑧	Valve Ass'y	Nylon+NBR	PP4-08A001-01
⑨	Filter Element	Polyethylene	PF4-24-005-01
⑩	Diaphragm Ass'y	Nylon+NBR	PR4-11A001-01
⑪	Bowl O-ring	NBR	TAF4000-08-6000
⑫	Valve O-ring	NBR	PR3-04-001-01

## Dimensions

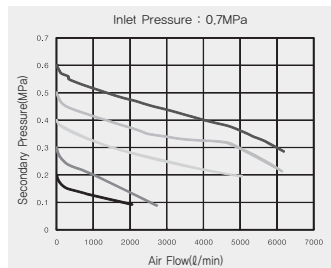


## Flow Characteristics

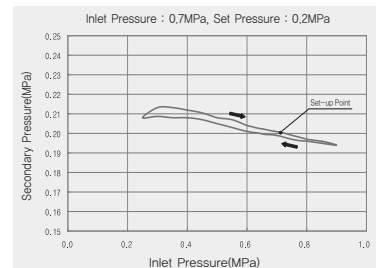
### ▶ 3/8" PP4



### ▶ 1/2" PP4



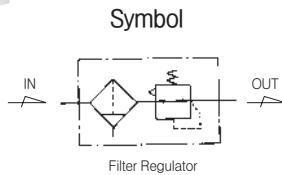
## Pressure Characteristics



- PC2
- PF2
- PR2
- PL2
- PP2
- PC3
- PF3
- PR3
- PL3
- PP3
- PC4
- PF4
- PR4
- PL4
- PP4**
- PC5
- PF5
- PR5
- PL5
- PP5
- PPH(U)2~  
PFH(U)5
- PPH(U)3~  
PFH(U)4
- PLV
- PSH
- PCV
- MB

# Series PP5

## Piggyback 3/4" and 1"



### Standard Specifications

Fluid	Air	
Max. Operating Pressure (MPa)	1.0(140psi)	
Proof Pressure (MPa)	1.5(200psi)	
Set Pressure	Standard	0.05~1.0
Range(MPa)	Madd to Order Specifications	0.05~0.2(7~30psi), 0.05~0.47(7~60psi), 0.05~1.5(7~200psi)
Ambient and Fluid Temperature (°C)	-5~60(23~140° F) (Non-freezing)	
Flow Capacity ※	3/4"	9,400(332scfm)
(N l /min)	1"	9,900(350scfm)
Filtration (μm)	5	
Construction	Relieving Sytle	
Bowl Material	Polycarbonate	
Bowl Guard Material	Nylon	
Drain Capacity (cm)	Manual Drain : 156(5.27oz), Auto Drain : 174(5.88oz)	
Weight (kg)	2.39(5.27lb)	

※ Test conditions : Supply pressure 0.7MPa(100psi), pre-set pressure 0.6MPa(90psi)

### How to Order

**PP 5 — \* 10 B D G — \***

Series (Piggyback Unit)

Thread

Blank	Rc(PT)
N	NPT
G	G(PF)

Port Size

06	3/4
10	1

Bracket Option

Blank	None
B	Bracket + Panel Nut
B1	Panel Nut

Note2) Separately packed, Not assembled.

#### Other Option

Blank	Set at 0 to 1.0 MPa, 5μm (Standard)		
2	Set at 0 to 0.2 MPa	J4	Filter element - 40μm
4	Set at 0 to 0.4 MPa	K	Built-in Check Valve
15	Set at 0 to 1.5 MPa	R	Flow direction : Right- Left
E	Non-Relieving Type	T	Tamper Resistant Kit
J2	Filter element - 20μm	XC16	Copper-free
Q1	Metal Bowl With/Sight Glass	Q2	Metal Bowl NO Sight Glass

Note1) Refer to page 935 for Built-in check valve, Tamper resistant kit.  
\* If ordering more than one option, indicate symbols numerically then alphabetically Ex) 2EK

\*Over Max. pressure value can be set.

#### Pressure Gauge

Symbol	Description	Pressure Range
Blank	None	
G	Integral Pressure Gauge (w/Limit Indicator)	1.0MPa
P	Pressure Gauge	1.0MPa
P2	Pressure Gauge	0.2MPa
P4	Pressure Gauge	0.4MPa

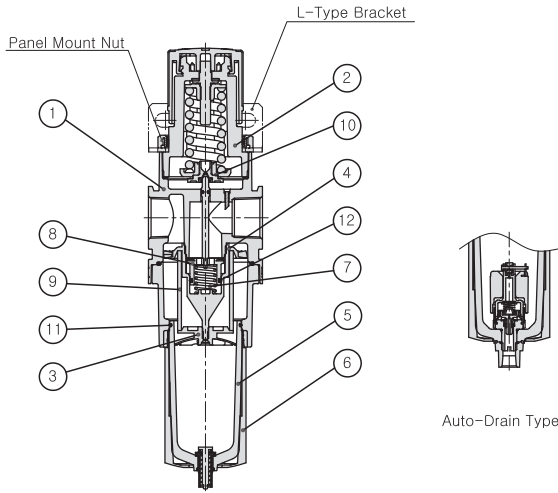
#### Drain Option

Blank	Manual Drain
D	Auto Drain (N.O Type)

Note3) Min. operating pressure is 0.15MPa(20psi) for Auto Drain (N.O Type)

# Series PP5

## Construction



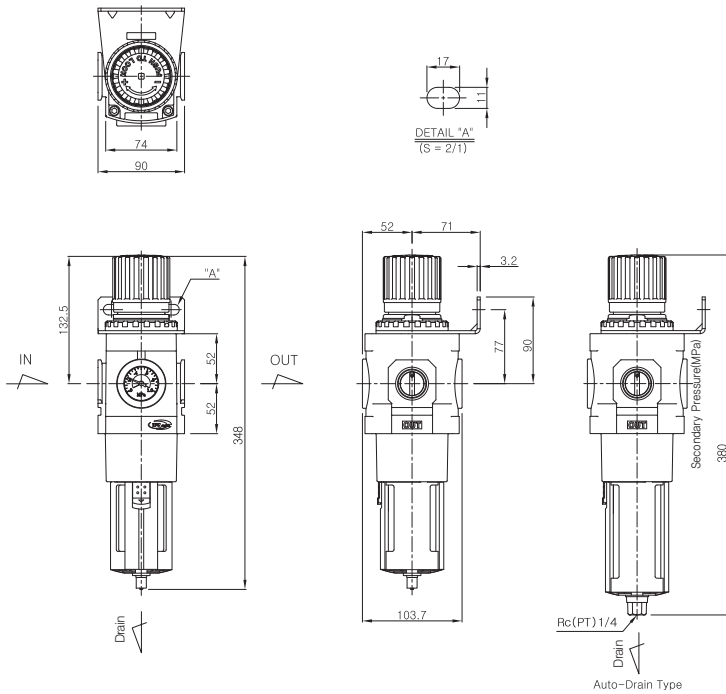
### Main Parts/Parts List

NO.	Description	Material	Remark
①	Body	Aluminum	
②	Bonnet	Aluminum	
③	Baffle	Acetal	
④	Deflector	Nylon	
⑤	Bowl	Polycarbonate	
⑥	Bowl Guard	Nylon	
⑦	Valve Spring	Stainless Steel	

### Replacement Parts/Parts List

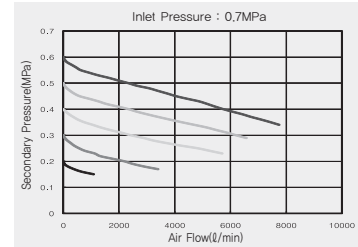
NO.	Description	Material	Part No.
⑧	Valve Ass'y	Brass+NBR	PP5-08A001-01
⑨	Filter Element	Polyethylene	PF5-24-005-01
⑩	Diaphragm Ass'y	Aluminum+NBR	PR5-11A001-01
⑪	Bowl O-ring	NBR	TAF4000-08-6000
⑫	Valve O-ring	NBR	P21-01

## Dimensions

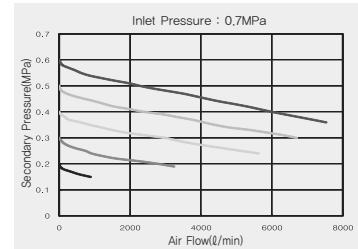


## Flow Characteristics

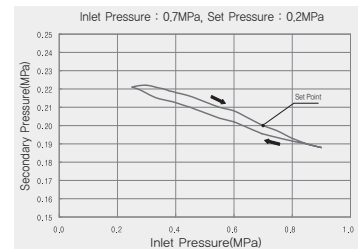
### ▶ 3/4" PP5



### ▶ 1" PP5



## Pressure Characteristics



PC2

PF2

PR2

PL2

PP2

PC3

PF3

PR3

PL3

PP3

PC4

PF4

PR4

PL4

PP4

PC5

PF5

PR5

PL5

PP5

PPH(U)2~  
PPH(U)5

PPH(U)3~  
PPH(U)4

PLV

PSH

PCV

MB